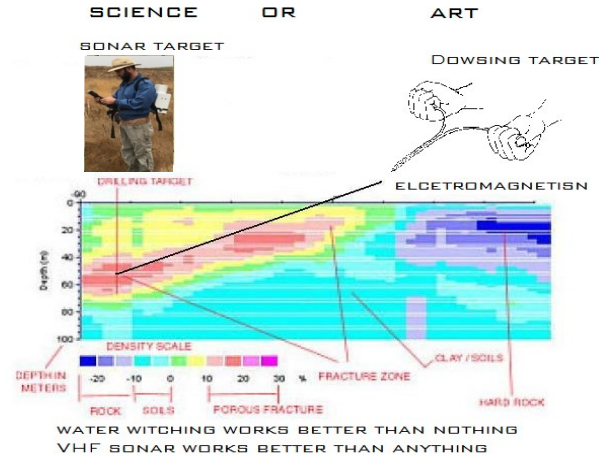
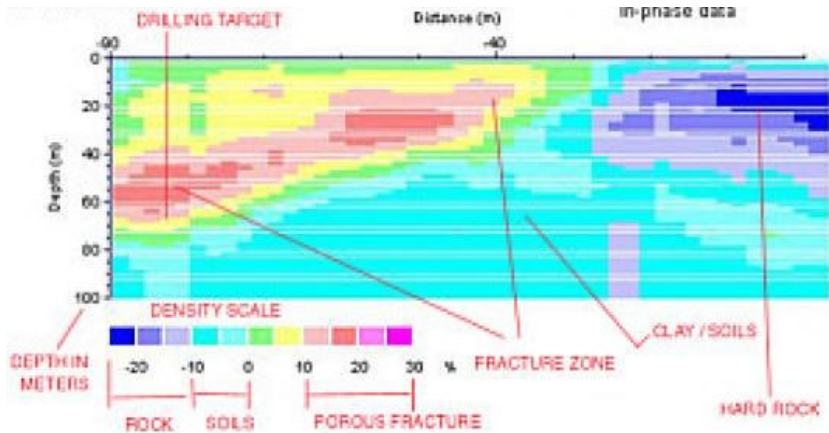


# What is VLF Sonar?

Very low frequency sound waves

THIS IS WHAT WE SEE:



“S4W” & “WGS” offers a proven 2 step scientific technology for locating water.

State of the art computerized geophysical survey equipment

is used to scan a parcel of land for potential ground water sources.

Members of the [National Ground Water Association](#)

## PRICING

*Unlike our competition, we publish ours*

[See our survey contracts](#)

**LARGER PROPERTIES: EXPLORATORY SURVEYS  $\frac{1}{2}$  DAY RATE \$2900 FULL DAY RATE \$3900**

Our price structure is based on the property that can be surveyed. Some terrain might be difficult for us to survey and will be even more difficult for the drilling company to access with their equipment. Please contact our office [707 4567 111] to discuss the details and survey options that we have available. For any property that is larger than 10 acres we can offer an exploratory survey. This allows us to cover more ground but we will sacrifice some of the detail that we would get on a standard ground water survey. This is a cost effective way to find water on large acreages. Many parcels do not require a survey of the entire parcel. Please contact our office so we can discuss your needs and give you some cost effective options. There may be additional Travel and Lodging charges depending on your location. Please contact our office [707 4567 111] for an accurate quote. Please let our office know if your property is cross fenced or has electrical power lines on or near the property.